

SOIL SCIENCE DEPARTMENT



[Prof. Peter Ahn \(Dr. Soil\)](#)

1972-1976



[Prof. Shellemiah O. Keya](#)

1976-1985



[Prof. Joseph K.O. Keter](#)

1986-1992



[Prof. Joseph P. Mbuvi](#)

1992-1995



[Prof. Nancy Karanja](#)

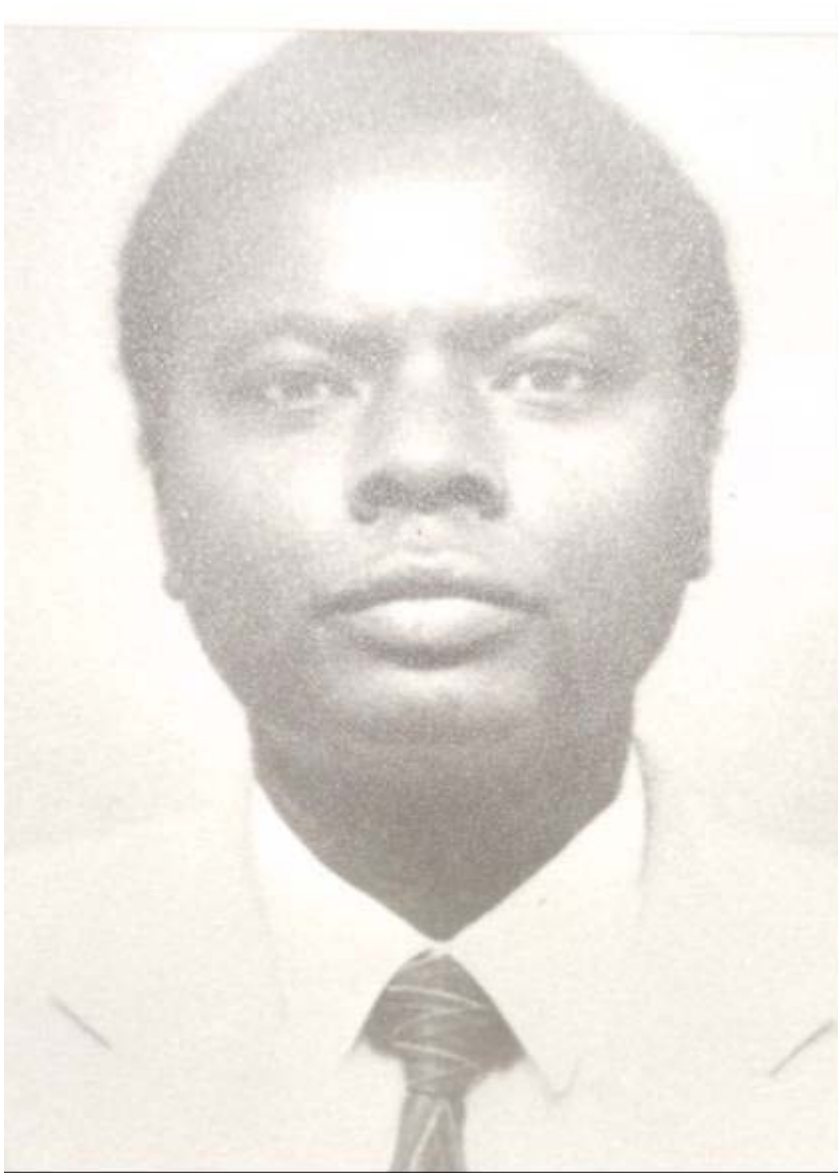
1996-2002



[Prof. Charles K.K. Gachene](#)

2002-2005

RANGE MANAGEMENT DEPARTMENT



[Prof. Christopher N. Karue](#)

1980-1986



[Prof. Jesse T. Njoka](#)

1986-1993



[Prof. Kassim O. Farah](#)

1993-1999



[Prof. Dickson M. Nyariki](#)

1999-2005

DEPARTMENT OF LAND RESOURCE MANAGEMENT & AGRICULTURAL TECHNOLOGY(LARMAT)



[Prof. Charles K.K. Gachene](#)

2005-2008



[Prof. Robinson Kinuthia. Ngugi](#)

2008- 2013



[Dr. Geoffrey Kironchi](#)

2013- To date